

375 - WICKER

Product Description:

375 Wicker is a classic wicker weave structure

Composition:

375 Wicker is an embossed panel with special developed veneer and melamine resins with a particle board core.

Fields of application:

Only for interior: Wall cladding, Interior fitout, shop and fair construction, doors.

Technical Data:

First given measurement specifies the direction of embossment:

Invoiced size (mm): 1050 x 2450

Delivered size (mm): 1050 x 2450

Repeating pattern: No repeating pattern

Available thicknesses: 4,5 mm / 18,5 mm

Coreboard: MDF / Particle Board

Surface: raw, unlacquered

Density: ca. 900 kg/m³

Weight: ca. 5 kg/m² (4,5 mm)
ca. 17 kg/m² (18,5 mm)

Embossment: one-side

Deepness of structure: max. 1.2 mm

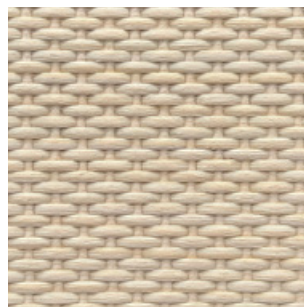
Tolerances:

Straightness: 3,0 mm per Meter

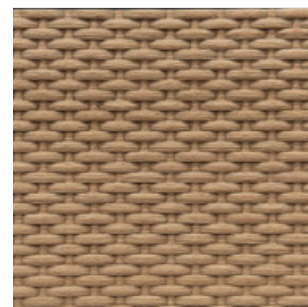
Size accuracy: +/- 1,0 mm per Meter

Thickness allowance: +/- 0,5 mm

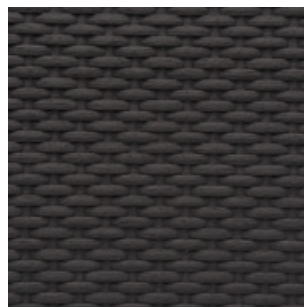
Exactitude of profile: +/- 1,5 mm



Light Oak
Fineline veneer



Walnut
Fineline veneer



Black
Fineline veneer

Explanatory notes:

The given details in this data sheet are our field-tested experience. They could not consider any parameter, use case or application and they are therefore without commitment. These data does not represent guarantee of condition in the legal sense or a assurance of the characteristics. No legal claims could be derived by using the information given in these data sheets or by our free of charge technical consultants. Images are for illustration purposes only. Wood is a natural product, deviations in color and texture can occur. Please visit our website for an impression of the color range, which can be expected.

Last update: 28.01.2026