

2602 - FLAMED WOOD

Product Description:

2602 Flamed Wood represents charred wood without being actually burned. The burned optic is gained by the special embossing process of multiple veneer layers. No unpleasant burnt smell, no dark stains, no crumbling and a closed surface, which does not need to be fixed afterwards.

Composition:

2602 Flamed Wood is an embossed panel with special developed veneer and melamine resins with a black MDF core (9mm), or particle board (20mm).

Fields of application:

Only for interior: Interior fittings. Furniture manufacture. Shop and fair construction. Doors.

Technical Data:

First given measurement specifies the direction of embossment:

Invoiced size (mm):	2450 x 1050
Delivered size (mm):	2450 x 1050
Repeating pattern:	No repeating pattern
Available thicknesses:	9mm, 20 mm
Coreboard:	black MDF, Particle board
Surface:	raw, unlacquered
Density:	ca. 1026 kg/m ³
Weight:	ca. 9,5 kg/m ² (9mm) ca. 16 kg/m ² (20mm)
Embossment:	one-side
Deepness of structure:	max. 1,5 mm

Tolerancen:

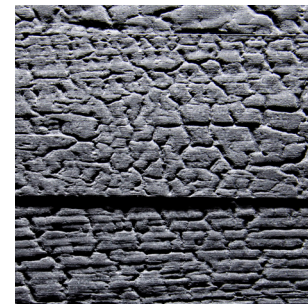
Straightness:	3,0 mm pro Meter
Size accuracy:	+/- 1,0 mm pro Meter
Thickness allowance:	+/- 0,3 mm
Exactitude of profile:	+/- 1,5 mm

Explanatory notes:

The given details in this data sheet are our field-tested experience. They could not consider any parameter, use case or application and they are therefore without commitment. These data does not represent guarantee of condition in the legal sense or a assurance of the characteristics. No legal claims could be derived by using the information given in these data sheets or by our free of charge technical consultants. Images are for illustration purposes only. Wood is a natural product, deviations in color and texture can occur. Please visit our website for an impression of the color range, which can be expected.



Black
Alpi veneer



Ash effect lacquered
Alpi veneer