

2555 - HUFNAGEL

Product Description:

2555 Hufnagel displays the even sequence of smallest horseshoe-nails, each with a size of approx. 4 x 4 mm. The combination with different veneers creates a fine and elegant structure.

Composition:

2555 Hufnagel is an embossed panel with special developed veneer / melamine resins with a MDF core.

Fields of application:

Only for interior: Interior fittings. Furniture manufacture. Shop and fair construction. Doors.

Technical Data:

First given measurement specifies the direction of embossment:

Invoiced size (mm): 2450 x 1050 / 3135 x 1270
 Delivered size (mm): 2450 x 1050 / 3145 x 1280

Repeating pattern: No repeating pattern

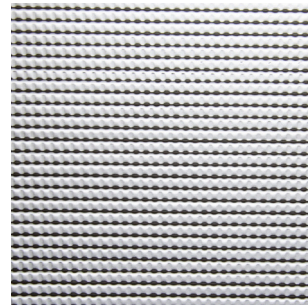
Available thicknesses: 4,5 mm / 18,5 mm
 Coreboard: MDF
 Surface: raw, unlacquered

Density: ca. 885 kg/m³
 Weight: ca. 6 kg/m² (4,5 mm)
 ca. 16,5 kg/m² (18,5 mm)

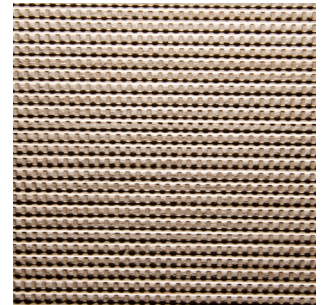
Embossment: one-side
 Deepness of structure: max. 1,5 mm

Tolerances:

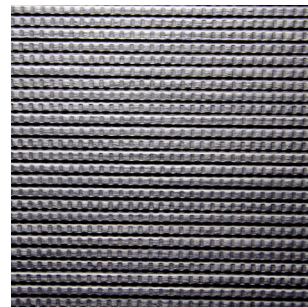
Straightness: 3,0 mm per Meter
 Size accuracy: +/- 1,0 mm per Meter
 Thickness allowance: +/- 0,3 mm
 Exactitude of profile: +/- 1,5 mm



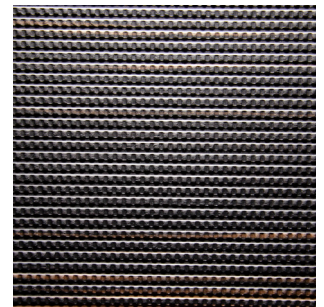
Lacquerable foil



Light Oak
Alpi veneer



Grey
Alpi veneer



Ebony Maro
Alpi veneer

Explanatory notes:

The given details in this data sheet are our field-tested experience. They could not consider any parameter, use case or application and they are therefore without commitment. These data does not represent guarantee of condition in the legal sense or a assurance of the characteristics. No legal claims could be derived by using the information given in these data sheets or by our free of charge technical consultants. Images are for illustration purposes only. Wood is a natural product, deviations in color and texture can occur. Please visit our website for an impression of the color range, which can be expected.

Last update: 10.07.2018