

2596 - RINDE

Product Description:

2596 Rinde displays real oak bark as authentic as possible without cracking and crumbling. The surface is already lacquered and available as a full sheet.

Composition:

2596 Rindenprofil is an embossed panel with special developed veneer with a multi-layer construction core.

Fields of application:

Only for interior: Interior fittings. Furniture manufacture. Shop and fair construction. Doors.

Technical Data:

First given measurement specifies the direction of embossment:

Invoiced size (mm): 2450 x 1050

Delivered size (mm): 2450 x 1050

Repeating pattern: No repeating pattern

Available thicknesses: 22 mm

Coreboard: Multi-layer construction

Surface: clear, matte lacquered

Density: ca. 840 kg/m³

Weight: ca. 16 kg/m²

Embossment: one-side

Deepness of structure: max. 7,0 mm

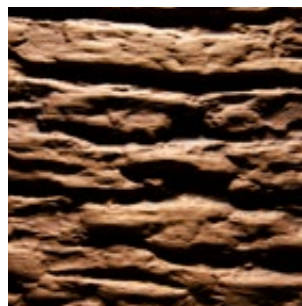
Tolerances:

Straightness: 3,0 mm per Meter

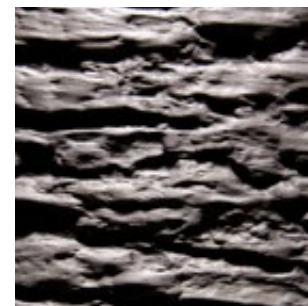
Size accuracy: +/- 1,0 mm per Meter

Thickness allowance: +/- 0,5 mm

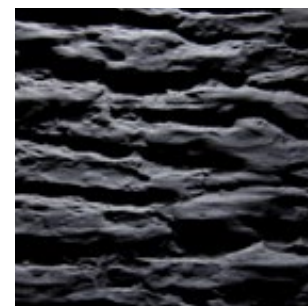
Exactitude of profile: +/- 1,5 mm



Oak smoked
Real wood veneer



Oak grey
Real wood veneer



Black Ash optic lacquered
Alpi veneer

Explanatory notes:

The given details in this data sheet are our field-tested experience. They could not consider any parameter, use case or application and they are therefore without commitment. These data does not represent guarantee of condition in the legal sense or a assurance of the characteristics. No legal claims could be derived by using the information given in these data sheets or by our free of charge technical consultants. Images are for illustration purposes only. Wood is a natural product, deviations in color and texture can occur. Please visit our website for an impression of the color range, which can be expected.

Last update: 10.07.2018